

**BRUCE MUSEUM**  
1 Museum Drive • Greenwich, CT

# EMILY MASON:

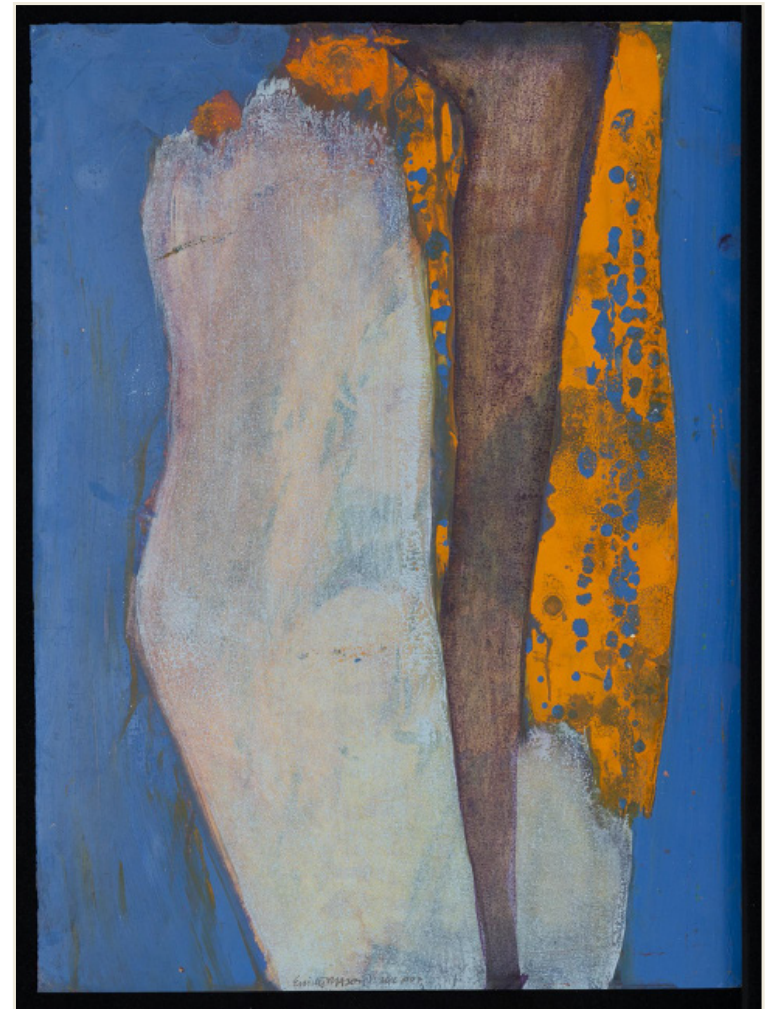
## UNDERSTANDING ABSTRACTION

The Bruce Museum is pleased to present “She Sweeps with Many-Colored Brooms”: Paintings and Prints by Emily Mason, November 22, 2020 - March 21, 2021. Emily Mason (1932-2019) was an artist based in New York City whose work focused on using abstract imagery and the relationships between colors to engage with viewers. Mason’s artwork creates an emotional and intellectual response by layering colors together to create associations. In the painting on



EMILY MASON (AMERICAN, 1932-2019), REACH, 1962.  
OIL AND PASTEL ON PAPER.

the left, Reach, Mason paired strong yellows and bright blues together so that in some places they mix and meld, while in others the colors are bright and clear. Mason allowed the paint to splatter and drip, so that there are no hard edges or clear divisions between colors or spaces. The title, Reach, may evoke thoughts of fingers, arms, or limbs, stretching across a divide to grasp at something unknown.



EMILY MASON (AMERICAN, 1932-2019), SEED FALL, 1967.  
OIL ON PAPER.

### YOU TRY IT!



Creating colorful abstract images is fun and easier than you may think. Instead of working with paint like Emily Mason, consider using scrap paper from around your house. Ask an adult if you can have old magazines, newspapers, or catalogues and find the most colorful pages. You could also use sheets of construction paper, if you have them. Cut the colorful pages up into different shapes using a pair of scissors. Arrange your shapes in a way that pleases you on a blank piece of paper. You may find you enjoy bright, contrasting colors, or more subdued neutral tones. Next, using either a glue-stick or school glue, glue your shapes down. If you like your paper collage, consider trying to recreate it using paint, markers, or another mark-making medium. Get creative and explore mixing paper collage with other mediums. You might make something really special! The most important thing is to have fun and be creative.



**GET**  
*Creative!*



#### Common Core State Standard:

Standard: ELA: Literacy: R.L. 3.3-5.3, R.L. 3.7-6.7, R.L. 3.1-5.1, R.L. 6.4-8.4, R.H. 6-8.4, R.H. 6-8.7